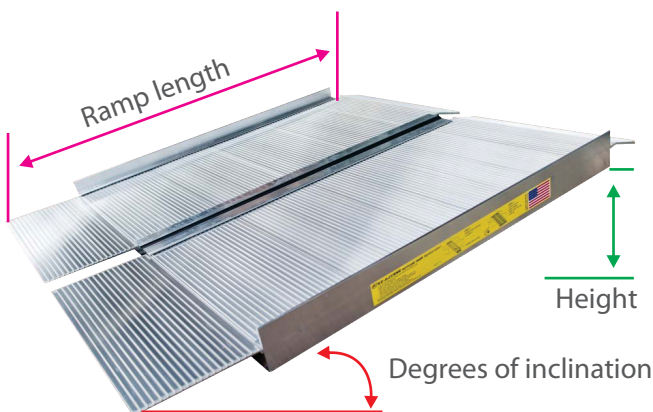
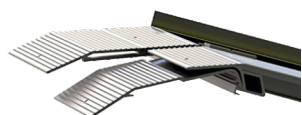
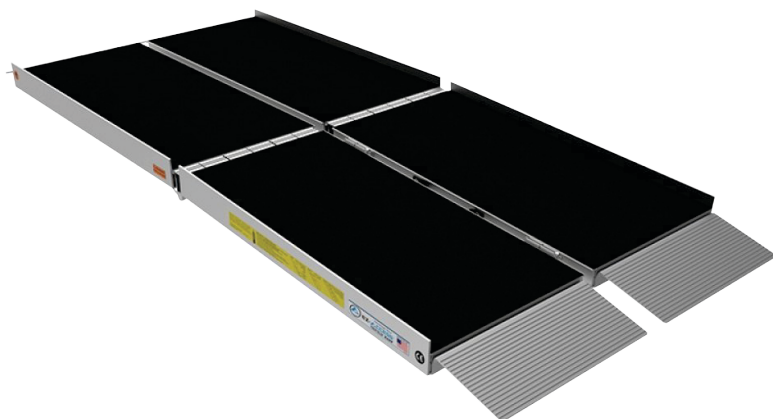


TRIFOLD Ramp



The SUITCASE® TRIFOLD® AS Ramp has a unique 3-fold design that allows for ultimate portability when longer ramp lengths are needed. The ramp is designed to be used and carried as one unit, or can be quickly separated into two individual sections. Offered in sizes ranging from 5' to 10' in length and is ideal for raised landings, steps, or larger vehicles. Made from aircraft-quality aluminum, this ramp features an applied, slip-resistant surface and self-adjusting bottom transition plates for easy conversion from ramp to ground. Explore the options, specifications, and features of the SUITCASE TRIFOLD AS Ramp to see if it meets your needs for accessibility.



Keeping you in mind. More options.

Quality products with the required accessories at a great price.

SPECIFICATIONS

Material	Aluminum
Broad	75 cm / 29.5"
Deep	152-154 cm / 5' - 10' Ft.
Product weight	8 - 13 Kg. / 16 - 30 lbs.
Weight capacity	362 kg / 800 lbs.
Surface	Anti-slip
Creased	In two
Extension	Optional



BENEFITS

Suitable for home, vehicle or travel and offer temporary or long-term solutions

Discover our products



DESIGNED FOR LATIN AMERICA

Products designed for the needs of Latin America and the Caribbean, backed by our professional support.



FUNCTIONAL VERSALITY

Our product line includes wheelchairs, mobility scooters, and lift chairs. Ask your local representative.

For more information on obtaining this product
Contact your local Loh Medical representative

Find your local representative at www.lohmedical.com   

