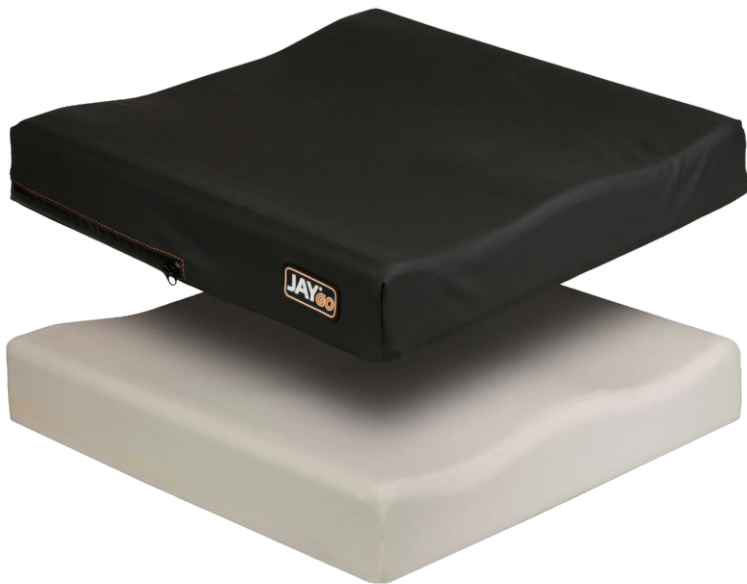


GO Cushion



The JAY® GO wheelchair cushion features a dual-layered foam construction with a soft, slightly contoured design and a Dartex® moisture-resistant cover, ideal for users at low risk of skin breakdown who need mild stability.

Features a firm bottom layer to provide a stable base of support and a soft top layer to maximize comfort and increase sitting tolerance. **Image 1.**

Coated with Dartex, this durable case is water resistant, making it easy to remove and clean. **Image 2.**

Four-way stretch Lycra cover reduces surface tension, allowing you to fully experience the softness of GO foam. **Image 3.**

Height of 3"(7.6 cm). **Image 4.**



Image 1

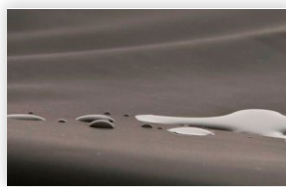


Image 2



Image 3



Image 4

Keeping you in mind. More options.

Wheelchair cushions designed to provide the user with support, comfort and protection.

SPECIFICATIONS

Width range	14" to 24"
Length	14" to 24"
Product weight	1.13 kg / 2.5 lbs (16"x18")
Height	7.6 cm / 3"
Weight capacity	14"-21" 136 kg / 300 lbs 22"-24" 226 kg / 500 lbs
Foam base	Mildly Contoured, Dual-Layered
Outer cover	Dartex®-Coated Lycra®
Settings	In width and depth

Soft top layer



Easy to disassemble for cleaning

BENEFITS

Designed for users at low risk of skin degradation requiring mild stability

Discover our products



DESIGNED FOR OUR TERRITORIES

Our products are designed to meet the needs of each of our territories, offering quality and affordable prices.



FUNCTIONAL VERSALITY

We have a variety of products ranging from a wide range of manual and power wheelchairs and mobility scooter.

**For more information on obtaining this product
Contact your local Loh Medical representative**

Find your local representative at www.lohmedical.com   

ver_2025.11.11E

